

MODEL	CODE	STOCK	φd (CLAMPING RANGE)	φD	L	H	COLLET	NUT	ADJUSTMENT SCREW	
Max 12,000mm ⁻¹										
SK30 (BSK30)	RSC07-090	400060	△	0.5~0.7	24	90	25~40	CR07-(D)	RSN07NB	M6×20L-CTW
	RSC10-060	400062	△	0.5~10	30	60	31~48	CR10-(D)	RSN10NB	RAS10-25-2.5
	RSC10-090	400064	△			90				
	RSC10-120		△			120				
	RSC13-065	400066	△	0.5~13	36	60	35~52	CR13-(D)	RSN13NB	RAS13-25-2.5
	RSC13-090	400068	△			90				
	RSC13-120		△			120				
	RSC16-065	400070	△	1~16	42	60	38~50	CR16-(D)	RSN16NB	RAS16-25-5
	RSC16-090	400072	△			90				
	RSC16-120		△			120				
	RSC20-075	400076	△	1.5~20	50	75	44~56.5	CR20-(D)	RSN20NB	
	RSC20-090	400078	△			90				
RSC20-120		△	120							
SK40 (BSK40)	RSC07-090	420180	△	0.5~7	24	90	25~40	CR07-(D)	RSN07NB	M6×20L-CTW
	RSC10-060	420182	△	0.5~10	30	60	31~48	CR10-(D)	RSN10NB	RAS10-25-2.5
	RSC10-090	420183	△			90				
	RSC10-120	420184	△			120				
	RSC13-065	420185	△	0.5~13	36	60	35~52	CR13-(D)	RSN13NB	RAS13-25-2.5
	RSC13-090	420186	△			90				
	RSC13-120	420188	△			120				
	RSC16-065	420190	△	1~16	42	60	38~70	CR16-(D)	RSN16NB	RAS16-25-5
	RSC16-090	420192	△			90				
	RSC16-120	420189	△			120				
	RSC20-070	420193	△	1.5~20	50	60	44~70	CR20-(D)	RSN20NB	RAS20-25-5
	RSC20-090	420194	△			90				
	RSC20-105	420196	△			90				
	RSC20-120	420198	△			120				

△: Produce per order

- NOTE: 1. Collet and chuck wrench are sold separately.
 2. CROH collet is used for thru-the-tool coolant application.
 3. Only BT shank and ST shank is coated.

ORDERING EXAMPLE

①	SK30	-	RSC	③	07	-	④	90
	BSK30	-	RSC		07	-		90

① Shank Size
 ② Holder's Name
 ③ Max. øD
 ④ Gauge length

ACCESSORIES
 ➔ P.57 NUT

ACCESSORIES
 ➔ P.53-56 COLLETS

ACCESSORIES
 ➔ P.57 ADJUST SCREW, CHUCK WRENCH

FIG.1

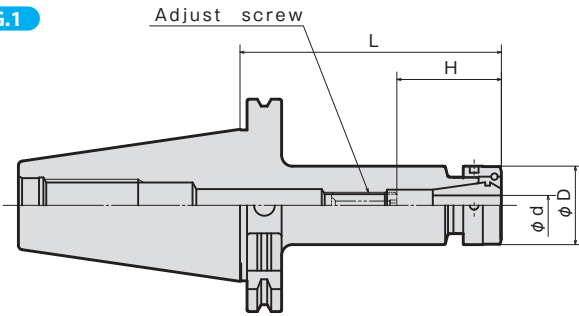
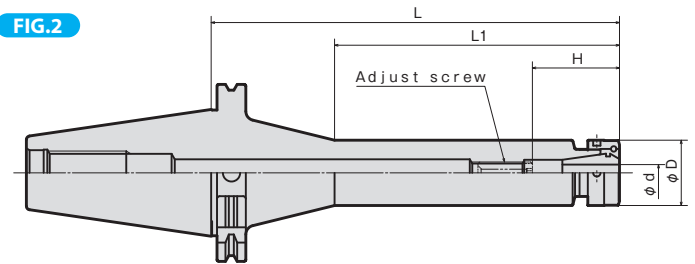


FIG.2



MODEL	CODE	FIG	φd (CLAMPING RANGE)	φD	L	H	COLLET	NUT	ADJUSTMENT SCREW	
Max 8,000mm ⁻¹										
SK50 (BSK50)	RSC07-090	450260	1	0.5~7	25	90	25~40	CR07-(D)	RSN07NB	(M6×20L-CTW)
	RSC10-075	450262	1	0.5~10	30	75	31~48	CR10-(D)	RSN10NB	RAS10-25-2.5
	RSC10-105	450264				105				
	RSC10-135	450330				135				
	RSC10-165	450332				165				
	RSC10-195	450334				195				
	RSC10-225	450336				225				
	RSC10-255	450338	2	0.5~10	30	255	31~48	CR10-(D)	RSN10NB	RAS10-25-2.5
	RSC10-285	450340				285				
	RSC13-075	450266	1	0.5~13	36	75	35~52	CR13-(D)	RSN13NB	RAS13-25-2.5
	RSC13-105	450268				105				
	RSC13-135	450270				135				
	RSC13-165	450272				165				
	RSC13-195	450274				195				
	RSC13-225	240342				225				
	RSC13-255	450344	2	0.5~13	36	255	35~52	CR13-(D)	RSN13NB	RAS13-25-2.5
	RSC13-285	450346				285				
	RSC16-075	450276	1	1~16	42	75	38~95	CR16-(D)	RSN16NB	RAS16-25-5
	RSC16-105	450278				105				
	RSC16-135	450280				135				
	RSC16-165	450282				165				
	RSC16-195	450284				195				
	RSC16-225	450348				225				
	RSC16-255	450350	2	1~16	42	255	38~77	CR16-(D)	RSN16NB	RAS16-25-5
RSC16-285	450352	285								
RSC20-075	450286	1	1.5~20	50	75	44~82	CR20-(D)	RSN20NB	RAS20-25-6	
RSC20-105	450287				105					
RSC20-135	450288				135					
RSC20-165	450290				165					
RSC20-195	450292				195					
RSC20-225	450393				225					
RSC20-255	450394	2	1.5~20	50	255	44~82	CR20-(D)	RSN20NB	RAS20-25-6	
RSC20-285	450395				285					

△: Produce per order

- NOTE: 1. Collet and chuck wrench are sold separately.
 2. CROH collet is used for thru-the-tool coolant application.
 3. Only BT shank and ST shank is coated.

ORDERING EXAMPLE

① SK50 - ② RSC - ③ 07 - ④ 90

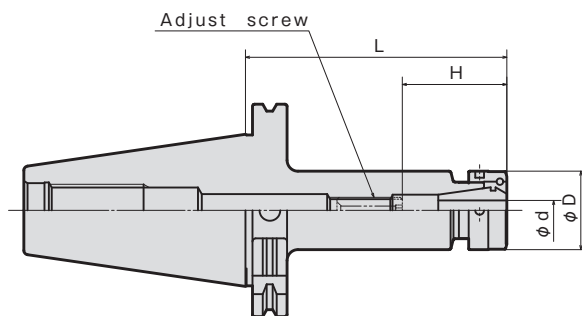
BSK50 - RSC - 07 - 90

① Shank Size
 ② Holder's Name
 ③ Max. φD
 ④ Gauge length

ACCESSORIES **P.57** NUT

ACCESSORIES **P.53-56** COLLETS

ACCESSORIES **P.57** ADJUST SCREW, CHUCK WRENCH



MODEL	CODE	ϕd (CLAMPING RANGE)	ϕD	L	H	COLLET	NUT	ADJUSTMENT SCREW	
Max 25,000mm ⁻¹									
SK30 (BSK30)	RSC07-090G	400040	0.5~0.7	25	90	25~40	CR07-(D)	RSN07NB	(M6×20L-CTW)
	RSC10-060G	400041	0.5~10	30	60	31~48	CR10-(D)	RSN10NB	RAS10-25-2.5
	RSC10-090G	400042			90				
	RSC10-120G				120				
	RSC13-065G	400043	0.5~13	36	60	35~52	CR13-(D)	RSN13NB	RAS13-25-2.5
	RSC13-090G	400044			90				
	RSC13-120G				120				
	RSC16-065G	400045	1~16	42	60	38~50	CR16-(D)	RSN16NB	RAS16-25-2.5
	RSC16-090G	400046			90	38~72			
	RSC16-120G				120				
	RSC20-075G	400047	1.5~20	50	75	44~56.5	CR20-(D)	RSN20NB	
	RSC20-090G	400048			90				
RSC20-120G		120							
SK40 (BSK40)	RSC07-090G	420130	0.5~7	25	90	25~40	CR07-(D)	RSN07NB	(M6×20L-CTW)
	RSC10-060G	420131	0.5~10	30	60	31~48	CR10-(D)	RSN10NB	RAS10-25-2.5
	RSC10-090G	420132			90				
	RSC10-120G				120				
	RSC13-065G	420133	0.5~13	36	60	35~52	CR13-(D)	RSN13NB	RAS13-25-2.5
	RSC13-090G	420134			90				
	RSC13-120G				120				
	RSC16-065G	420135	1~16	42	60	38~70	CR16-(D)	RSN16NB	RAS16-25-5
	RSC16-090G	420136			90	38~77			
	RSC16-120G				120				
	RSC20-070G	420138	1.5~20	50	60	44~70	CR20-(D)	RSN20NB	RAS20-25-6
	RSC20-090G	420170			90	44~72			
RSC20-105G		90			44~82				
RSC20-120G		120							

△: Produce per order

- NOTE: 1. Collet and chuck wrench are sold separately.
2. CROH collet is used for thru-the-tool coolant application.
3. Only BT shank and ST shank is coated.

ORDERING EXAMPLE								
①	SK30	-	RSC	07	-	90	-	G
②	BSK30	-	RSC	07	-	90	-	G
③	Shank Size							
④	Holder's Name							
⑤	Max. ϕD							
⑥	Gauge length							
⑦	G-Type							

ACCESSORIES
➔ P.57 NUT

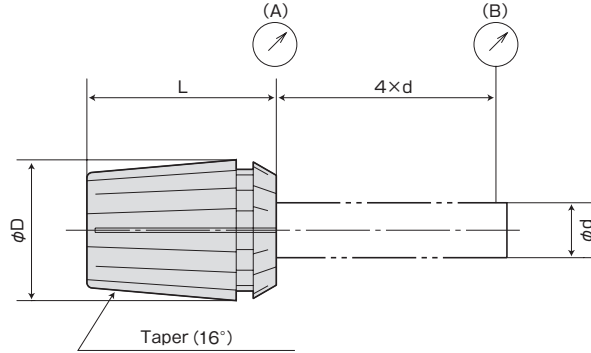
ACCESSORIES
➔ P.53-56 COLLETS

ACCESSORIES
➔ P.57 ADJUST SCREW, CHUCK WRENCH



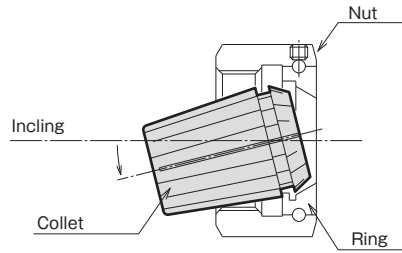
CR COLLET

CR[Ⓝ]-D



Easy collet setting

- A half of ID of the ring is enlarged. Collet can be mounted easily by inclining it.



GRADE	RUNOUT (MAX. μm)	
	NOSE (A)	POINT (B)
(AA)	1	3
(A)	2	5
(STD)	5	15

Grade	application
AA grade · A grade	Reamer · Center drill Carbide small diameter drill, Endmill Whetstone for internal cylindrical grinding, Tool for high frequency motors Carbide drill Rotating tool for lathes (the tool rotation)
Standard	General drill, tap Rotating tool for lathes (Work rotating)

CHUCK COLLET CODE	RSC07		RSC10		RSC13		RSC16		RSC20	
	CR07-d	GRADE	CR10-d	GRADE	CR13-d	GRADE	CR16-d	GRADE	CR20-d	GRADE
φd	φd	RANGE	φd	RANGE	φd	RANGE	φd	RANGE	φd	RANGE
	1.0	0.5~1.0	1.0	0.5~1.0	1.0	0.5~1.0	1.5	1.0~1.5	2.0	1.5~2.0
	1.5	1.0~1.5	1.5	1.0~1.5	1.5	1.0~1.5	2.0	1.5~2.0	2.5	2.0~2.5
	2.0	1.5~2.0	2.0	1.5~2.0	2.0	1.5~2.0	2.5	2.0~2.5	3.0	2.5~3.0
	2.5	2.0~2.5	2.5	2.0~2.5	2.5	2.0~2.5	3.0	2.5~3.0	4.0	3.0~4.0
	3.0	2.5~3.0	3.0	2.5~3.0	3.0	2.5~3.0	4.0	3.0~4.0	5.0	4.0~5.0
	3.5	3.0~3.5	4.0	3.0~4.0	4.0	3.0~4.0	5.0	4.0~5.0	6.0	5.0~6.0
	4.0	3.5~4.0	5.0	4.0~5.0	5.0	4.0~5.0	6.0	5.0~6.0	7.0	6.0~7.0
	4.5	4.0~4.5	6.0	5.0~6.0	6.0	5.0~6.0	7.0	6.0~7.0	8.0	7.0~8.0
	5.0	4.5~5.0	7.0	6.0~7.0	7.0	6.0~7.0	8.0	7.0~8.0	9.0	8.0~9.0
	5.5	5.0~5.5	8.0	7.0~8.0	8.0	7.0~8.0	9.0	8.0~9.0	10.0	9.0~10.0
	6.0	5.5~6.0	9.0	8.0~9.0	9.0	8.0~9.0	10.0	9.0~10.0	11.0	10.0~11.0
	6.5	6.0~6.5	10.0	9.0~10.0	10.0	9.0~10.0	11.0	10.0~11.0	12.0	11.0~12.0
	7.0	6.5~7.0			11.0	10.0~11.0	12.0	11.0~12.0	13.0	12.0~13.0
					12.0	11.0~12.0	13.0	12.0~13.0	14.0	13.0~14.0
					13.0	12.0~13.0	14.0	13.0~14.0	15.0	14.0~15.0
						15.0	14.0~15.0	16.0	15.0~16.0	
						16.0	15.0~16.0	17.0	16.0~17.0	
								18.0	17.0~18.0	
								19.0	18.0~19.0	
								20.0	19.0~20.0	
φD	11		16		20		25		32	
L	18		27		31		35		40	

Collet for through the groove (produce by order) are also available.

ORDERING EXAMPLE

① CR07 - ② 1.5 ③ AA

- ① Chuck Type
- ② φd
- ③ Grade

ACCESSORIES for COLLET CHUCK

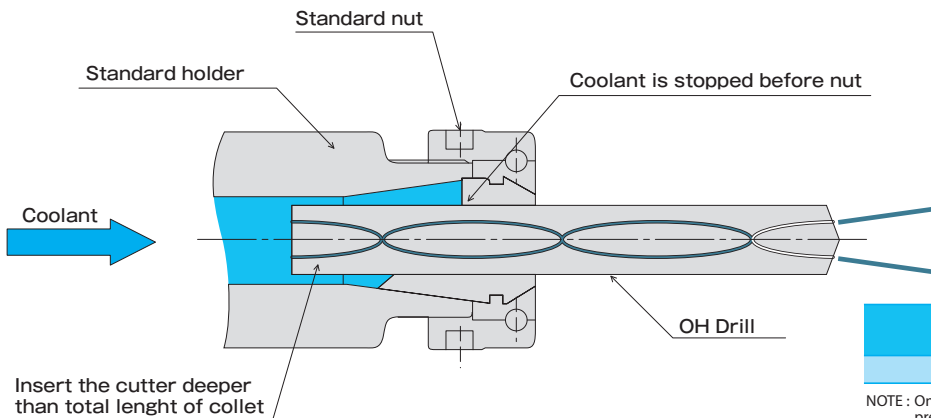


OIL HOLE CR COLLET

CROH[®]-D

FEATURES

- For thru-the tool coolant application.
- High pressure up to 7 Mpa is acceptable.
- Standard holders and nuts can be used.
- Bearing of nut is not affected by coolant.



GRADE	RUNOUT (MAX. μm) 4 \times d
(AA)	5 μm

NOTE : Only super precious grade (AA) is available for sale only ultra precision grade (AA) type.

COLLET CODE/CHUCK	RSC07 CROH07-d GRADE		RSC10 CROH10-d GRADE		RSC13 CROH13-d GRADE		RSC16 CROH16-d GRADE		RSC20 CROH20-d GRADE	
ϕd	ϕd	RANGE	ϕd	RANGE	ϕd	RANGE	ϕd	RANGE	ϕd	RANGE
	2.0	1.9~2.0	2.0	1.9~2.0	3.0	2.9~3.0	3.0	2.9~3.0	3.0	2.9~3.0
	2.5	2.4~2.5	2.5	2.4~2.5	3.5	3.4~3.5	3.5	3.4~3.5	3.5	3.4~3.5
	3.0	2.9~3.0	3.0	2.9~3.0	4.0	3.9~4.0	4.0	3.9~4.0	4.0	3.9~4.0
	4.0	3.9~4.0	4.0	3.9~4.0	4.5	4.4~4.5	4.5	4.4~4.5	4.5	4.4~4.5
	4.5	4.4~4.5	4.5	4.4~4.5	5.0	4.9~5.0	5.0	4.9~5.0	5.0	4.9~5.0
	5.0	4.9~5.0	5.0	4.9~5.0	5.5	5.0~5.5	5.5	5.4~5.5	5.5	5.4~5.5
	5.5	5.4~5.5	5.5	5.0~5.5	6.0	5.5~6.0	6.0	5.5~6.0	6.0	5.9~6.0
	6.0	5.9~6.0	6.0	5.5~6.0	6.5	6.0~6.5	6.5	6.0~6.5	6.5	6.4~6.5
	6.5	6.4~6.5	6.5	6.0~6.5	7.0	6.5~7.0	7.0	6.5~7.0	7.0	6.9~7.0
	7.0	6.9~7.0	7.0	6.5~7.0	7.5	7.0~7.5	7.5	7.0~7.5	7.5	7.4~7.5
			7.5	7.0~7.5	8.0	7.5~8.0	8.0	7.5~8.0	8.0	7.5~8.0
			8.0	7.5~8.0	8.5	8.0~8.5	8.5	8.0~8.5	8.5	8.0~8.5
			8.5	8.0~8.5	9.0	8.5~9.0	9.0	8.5~9.0	9.0	8.5~9.0
			9.0	8.5~9.0	9.5	9.0~9.5	9.5	9.0~9.5	9.5	9.0~9.5
			9.5	9.0~9.5	10.0	9.5~10.0	10.0	9.5~10.0	10.0	9.5~10.0
			10.0	9.5~10.0	10.5	10.0~10.5	10.5	10.0~10.5	10.5	10.0~10.5
					11.0	10.5~11.0	11.0	10.5~11.0	11.0	10.5~11.0
					11.5	11.0~11.5	11.5	11.0~11.5	11.5	11.0~11.5
					12.0	11.5~12.0	12.0	11.5~12.0	12.0	11.5~12.0
					12.5	12.0~12.5	12.5	12.0~12.5	12.5	12.0~12.5
					13.0	12.5~13.0	13.0	12.5~13.0	13.0	12.5~13.0
							13.5	13.0~13.5	13.5	13.0~13.5
							14.0	13.5~14.0	14.0	13.5~14.0
							14.5	14.0~14.5	14.5	14.0~14.5
							15.0	14.5~15.0	15.0	14.5~15.0
							15.5	15.0~15.5	15.5	15.0~15.5
							16.0	15.5~16.0	16.0	15.5~16.0
									16.5	16.0~16.5
									17.0	16.5~17.0
									17.5	17.0~17.5
									18.0	17.5~18.0
									18.5	18.0~18.5
									19.0	18.5~19.0
									19.5	19.0~19.5
									20.0	19.5~20.0
ϕD		11		16		20		25		32
L		18		27		31		35		40

- NOTE : 1. Applicable for drill with oil hole.
 2. When in use insert a drill to the end from the rear of the collet.
 3. Do not use smaller sized cutting tools than inner diameter of collet, or coolant may leak out of a collet.
 4. If flat-face shank cutting tool is used, sealing function of collet does not work.

ORDERING EXAMPLE

① CROH10 - ② 10 ③ AA

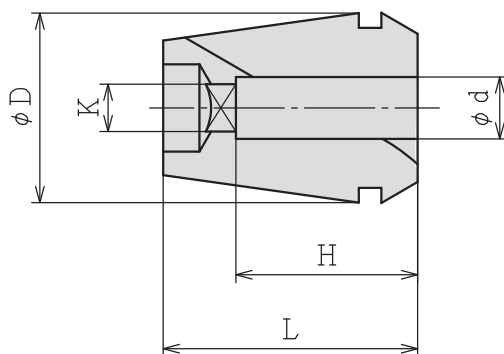
① Chuck Type
 ② ϕd
 ③ Grade



CR TAP COLLET

CR[®]GB-[Ⓧ]

CR collet with square hole for shank end of tap (for synchro tap).



MODEL	CODE	TAP SIZE	ϕd	K	H	ϕD	L	TAP HOLDER	COLLET CHUCK					
CR10GB	-M4	84700	M4	5	4	16	27	-	RSC10					
	-M5	84702	M5	5.5	4.5									
	-M6	84704	M6	6	4.5									
	-M8	84706	M8	6.2	5									
	-M10	84708	M10	7	5.5									
	-P1/8	84710	P1/8	8	6									
CR13GB	-M4	84712	M4	5	4	20	31	SYFN12	RSC13					
	-M5	84714	M5	5.5	4.5									
	-M6	84716	M6	6	4.5									
	-M8	84718	M8	6.2	5									
	-M10	84720	M10	7	5.5									
		-P1/8	84722	P1/8	8					6				
	-M12	84724	M12	8.5	6.5									
CR16GB	-M4	84726	M4	5	4	25	35	SYFN16S	RSC16					
	-M5	84728	M5	5.5	4.5									
	-M6	84730	M6	6	4.5									
	-M8	84732	M8	6.2	5									
	-M10	84734	M10	7	5.5									
		-P1/8	84736	P1/8	8					6				
		-M12	84738	M12	8.5					6.5				
		-M14	84740	M14	10.5					8				
		-P1/4	84742	P1/4	11					9				
		-M16	84744	M16	12.5					10				
	-P3/8	84746	P3/8	14	11									
CR20GB	-M4	84748	M4	5	4	32	40	SYFN20	RSC20					
	-M5	84750	M5	5.5	4.5									
	-M6	84752	M6	6	4.5									
	-M8	84754	M8	6.2	5									
	-M10	84756	M10	7	5.5									
		-P1/8	84758	P1/8	8					6				
		-M12	84760	M12	8.5					6.5				
		-M14	84762	M14	10.5					8				
		-P1/4	84764	P1/4	11					9				
		-M16	84766	M16	12.5					10				
		-P3/8	84768	P3/8	14					11				
		-M18	84770	M18	14					11				
		-M20	84772	M20	15					12				

NOTE : 1. Above table is for a tap of JIS standard shank.
2. Run-out accuracy is subject to ordinary (STD) class.

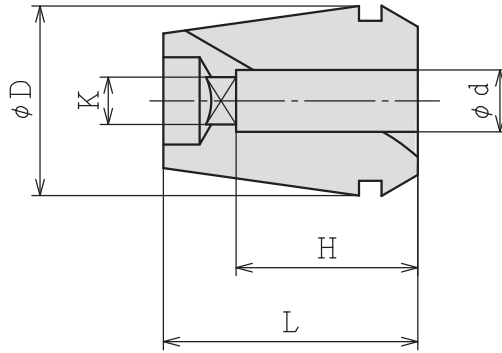
ACCESSORIES for COLLET CHUCK



OIL HOLE CR TAP COLLET

CR¹⁰GH-[⊕]

OH-type collet with square hole is for high-pressure centre-through coolant feeding (for synchro tapping) .



MODEL	CODE	TAP SIZE	φd	K	H	φD	L	TAP HOLDER	COLLET CHUCK
CR10GH	-M6	84800	M6	6	4.5	16	27	-	RSC10
	-M8	84802	M8	6.2	5				
	-M10	84804	M10	7	5.5				
	-P1/8	84806	P1/8	8	6				
CR13GH	-M6	84808	M6	6	4.5	20	31	SYFN12	RSC13
	-M8	84810	M8	6.2	5				
	-M10	84812	M10	7	5.5				
	-P1/8	84814	P1/8	8	6				
CR16GH	-M6	84818	M6	6	4.5	25	35	SYFN16S	RSC16
	-M8	84820	M8	6.2	5				
	-M10	84822	M10	7	5.5				
	-P1/8	84824	P1/8	8	6				
	-M12	84826	M12	8.5	6.5				
	-M14	84828	M14	10.5	8				
	-P1/4	84830	P1/4	11	9				
CR20GH	-M6	84836	M6	6	4.5	32	40	SYFN20	RSC20
	-M8	84838	M8	6.2	5				
	-M10	84840	M10	7	5.5				
	-P1/8	84842	P1/8	8	6				
	-M12	84844	M12	8.5	6.5				
	-M14	84846	M14	10.5	8				
	-P1/4	84848	P1/4	11	9				
	-M16	84850	M16	12.5	10				
	-P3/8	84852	P3/8	14	11				
	-M18	84854	M18	14	11				
-M20	84856	M20	15	12					

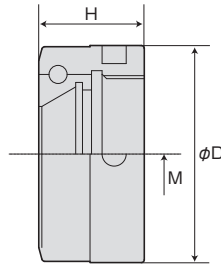
- NOTE :
1. Above table is for a tap of JIS standard shank.
 2. Run-out accuracy is subject to ordinary (STD) class.
 3. In the case of OSG Corporation synchro tap, shank diameter, square end dimensions are different from others so that there is the case that you can not use it even if tap size is the same.
 4. Gap-through collet is also available. Please order separately.

ACCESSORIES for COLLET CHUCK



NUT FOR COLLET CHUCK

RSN (No.) - TYPE



for BT, ST

Through-Coolant use

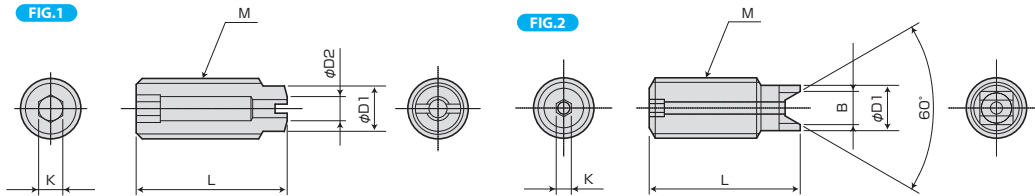
CODE	M	φD	H	CHUCK
RSN07NB (Ni) 30891	M16×1.0	24	11.5	RSC07
RSN10NB (Ni) 30892	M21×1.0	30	15.5	RSC10
RSN13NB (Ni) 30893	M26×1.0	36	17.5	RSC13
RSN16NB (Ni) 30894	M32×1.0	42	17.5	RSC16
RSN20NB (Ni) 30895	M40×1.0	50	17.5	RSC20

CODE	M	φD	H	CHUCK
RSN10NB-OH 30870	M21×1.0	30	15.5	RSC10
RSN13NB-OH 30871	M26×1.0	36		RSC13
RSN16NB-OH 30872	M32×1.0	42	17.5	RSC16
RSN20NB-OH 30873	M40×1.0	50		RSC20

Note: Single use of OH nut can not cope with the thru-the-tool coolant.



ADJUST SCREW (For COLLET CHUCK)



MODEL	FIG	M	L	D1	D2	K	B	HOLDER
M6×20L-CTW 1)	1	M6×1.0	20	4.5	3	3	—	RSC07
RAS10-25-2.5 2)	2	M10×1.5	25	7.5	—	2.5	5.5	RSC10
RAS13-25-2.5 2)		M12×1.5		9.5			7.2	RSC13
RAS16-25-5 2)		M18×1.5		13.5		5	9.5	RSC16
RAS20-25-5 2)		M24×1.5		17.5				RSC20

Note 1: Drill less than φ3 cannot be used for adjustment protrusion in order to enter the coolant hole.

CTW is not in the two pieces shape

Note 2: Drill less than φ2 cannot be used for adjustment protrusion in order to enter the coolant hole.



CHUCK WRENCH (For COLLET CHUCK)

CODE	CHUCK
FP25 35844	RSC07
FP30 35845	RSC10
FP35 35846	RSC13
FP42 35847	RSC16
FP50 35848	RSC20