

MODEL	CODE	øD1	L	L1	L2	L3	øD2	øC1	N/W (kg)	
ST32	-CTH16	30002	32	95	48	50	42	16	52	1.0
ST42	-CTH16	30004	42							1.5

ORDERING EXAMPLE		
①	ST32	② CTH - ③ 16
① Shank Size		
② Holder's Name		
③ Cutter's Shank Dia.		



ACCESSORIES

▶ P.47 SPRING COLLET



ACCESSORIES

▶ P.49 CHUCK WRENCH



ACCESSORIES

▶ P.48 STRAIGHT COLLETS, ADJUST SCREW

ACCESSORIES for HARD CHUCK



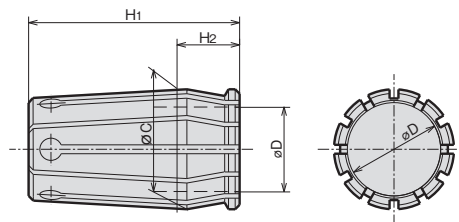
SPRING COLLET (For HARD CHUCK)

C^① - D^②

ORDERING EXAMPLE

^① C12 - ^② 6

- ① Chuck Type
- ② ϕ D



CODE	ϕ D										ϕ C	H1	H2	Applicable holder			
														CTH12L	CTH	CT	
C12L-D	6	8	10	12							18.00	40	13	CTH12L	—	—	
C16-D	6	8	10	12	16						24.00	50	17	—	CTH16	—	
C20-D	6	8	10	12	16	20					28.75	50	15	—	CTH20	—	
C25-D			10	12	16	20	25				35.75	68	19	—	CTH25	CT25	
C32-D					16	20	25	32			45.25	80	21	—	CTH32	CT32	
※CS32-D(SHORT)					16	20	25	32			45.25	70	21	—	CTH32	—	
C42-D						20	25	32	42		55.00	90	21	—	CTH42	—	
C50-D								32	42	50	50.8	65.00	95	25	—	CTH50	—

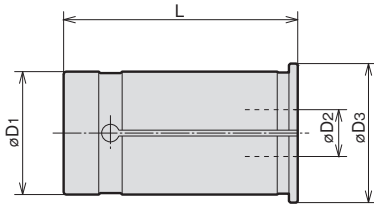
NOTE※ CS32-D(SHORT) spring collet is for BT40·NT40 Hard Chuck.

ACCESSORIES for HARD CHUCK



STRAIGHT COLLET

SC^①-^②D₂



CODE		øD3	L
SC ^① - ^② D ₂			
SC16	-6·8·10·12	20	47
SC20	-6·6.8·7·8·8.5·9·10·11·12·13·14·15·16	23.5	50
SC25	-6·6.8·7·8·8.5·9·10·11·12·13·14·15·16·17·18·19·20·21	30	60
SC32	-6·6.8·7·8·8.5·9·10·11·12·13·14·15·16·17·18·19·20·21·22·23·24·25	37.5	70
SC42	-6·6.8·7·8·8.5·9·10·11·12·13·14·15·16·17·18·19·20·21·22·23·24·25·32	47.5	80

ORDERING EXAMPLE

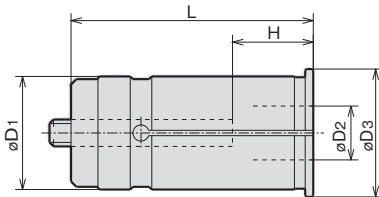
① SC ② 16 - ③ 6

- ① Name
- ② D1
- ③ D2



STRAIGHT COLLET WITH ADJUST SCREW

NC^①-^②D₂



CODE		øD3	L	H	
NC ^① - ^② D ₂				MIN.	MAX.
NC20	-6·8·10·12·16	23.5	60	25	35
	-6·8·10			20	45
NC32	-12·16·20·25	37.5	80	25	55
	-6·8·10·12			20	45
NC42	-16·20·25·32	47.5	90	30	65

Note:
* For all SHOWA chuck

ORDERING EXAMPLE

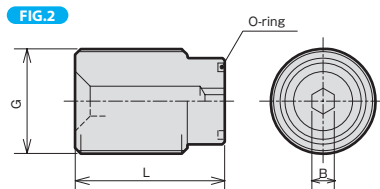
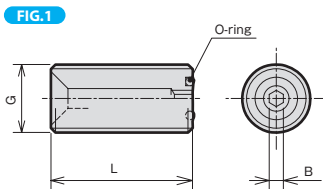
① NC ② 32 - ③ 6

- ① Name
- ② D1
- ③ D2



ADJUST SCREW (For HARD CHUCK, NEW MILLING CHUCK)

OR-M^①-^②L



ORDERING EXAMPLE

① OR ② M10 - ③ 25

- ① Name
- ② G
- ③ L

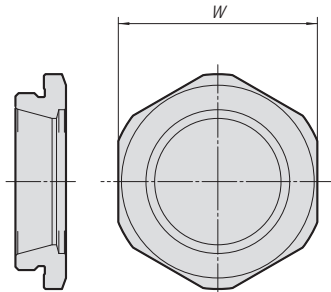
CODE	FIG.	G	L	B	O-ring
OR-M10(-25)	1	M10×1.5	25	2.5	S- 5
OR-M12(-25)		M12×1.5	25	2.5	S- 5
OR-M14(-35)		M14×1.5	35	4	P- 6
OR-M18(-25)		M18×1.5	25	5	P- 9
OR-M18(-35)		M18×1.5	35	5	P- 9
OR-M24 -25		M24×1.5	25	6	P- 9
OR-M24(-35)	2	M24×1.5	35	6	P- 9
OR-M28 -25		M28×1.5	25	6	P-16
OR-M28(-40)		M28×1.5	30	6	P-16
OR-M28(-30)		M28×1.5	40	6	P-16
OR-M36 -20		M36×1.5	20	6	P-21
OR-M36(-40)		M36×1.5	40	6	P-21

ACCESSORIES for HARD CHUCK



NOSE PIECE (For HARD CHUCK)

N^(No.)-D

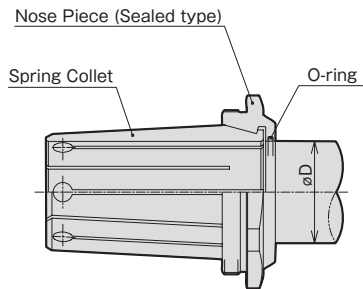


MODEL	CODE	W	holder
N16-16	33702	39	CTH16
N20-20	33703	43	CTH20
N25-25	33704	51	CTH25
N32-32	33706	63	CTH32
N42-42	33708	74	CTH42
N50-50	33710	84	CTH50



NOSE PIECE (For HARD CHUCK)

NG^(No.)-D



ORDERING EXAMPLE

① **NG** ② **16** - ③ **6**

- ① Name
- ② Chuck Size
- ③ øD

CODE	øD						HARD CHUCK CODE					
NG16-øD	6	8	10	12	16						CTH16	
NG20-øD	6	8	10	12	16	20					CTH20	
NG25-øD				12	16	20	25				CTH25	
NG32-øD					16	20	25	32			CTH32	
NG42-øD						20	25	32	42		CTH42	
NG50-øD								32	42	50	50.8	CTH50



CHUCK WRENCH (For HARD CHUCK)

HOOK SPANNER		
CHUCK CODE	WRENCH CODE	
HARD CHUCK		
CTH12L,CTH16	FS52-55G	35852
CTH20,CT25G	FS58-62G	35853
CTH25,CT32G	FS68-75G	35854
CTH32	FS80-90G	35855
CTH42	FS92-100	
CTH50	FS105-115	35829