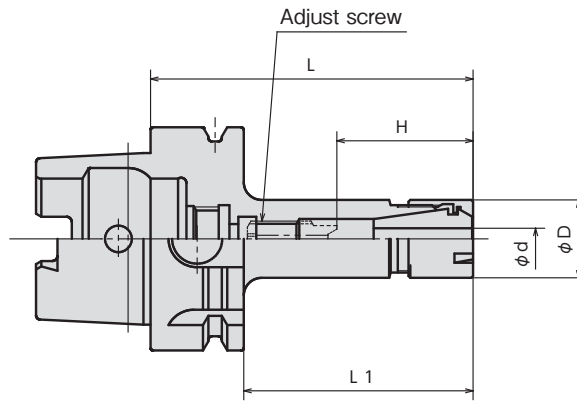


▶▶ Thru-the-tool Coolant Available

▶▶ Thru-the-groove Coolant Available



MODEL	CODE	ød	øD	L	L1	H	COLLET	NUT	ADJUST SCREW	
HSKA50	SSC07-090	310011	0.5~7	16	90	64	25~40	CR07-d	ER11MN	M6×20L-CTW
	SSC07-135	310012			135	109				
	SSC10-090	310013	0.5~10	22	90	64	31~48	CR10-d	ER16MN	RAS10-25-2.5
	SSC10-135	310014			135	109				
	SSC13-090	310015	0.5~13	28	90	64	35~52	CR13-d	ER20MN	RAS13-25-2.5
	SSC13-135	310016			135	109				
HSKA63	SSC07-090	321351	0.5~7	16	90	64	25~40	CR07-d	ER11MN	M6×20L-CTW
	SSC07-135	321352			135	109				
	SSC10-090	321353	0.5~10	22	90	64	31~48	CR10-d	ER16MN	RAS10-25-2.5
	SSC10-135	321354			135	109				
	SSC13-105	321355	0.5~13	28	105	79	35~52	CR13-d	ER20MN	RAS13-25-2.5
	SSC13-150	321356			150	124				

- NOTE: 1. A Coolant pipe is supplied with chuck.
 2. Collet and chuck wrench are sold separately.
 3. CROH collet is used for thru-the-tool coolant application.

ORDERING EXAMPLE			
①	②	③	④
HSKA63	- SSC	10	- 135
① Shank Size	② Holder's Name	③ Max. øD	④ G.L. Length



ACCESSORIES

▶ P.122,123 COLLETS



ACCESSORIES

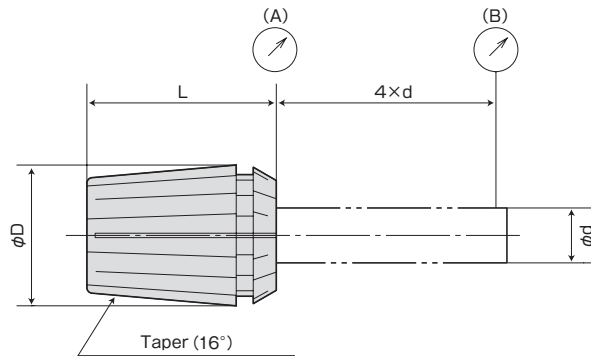
▶ P.128 NUT, ADJUST SCREW, CHUCK WRENCH

ACCESSORIES for COLLET CHUCK



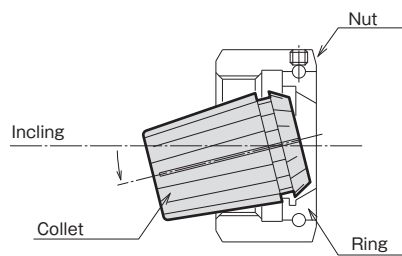
CR COLLET

CR[Ⓜ]-D



Easy collet setting

- A half of ID of the ring is enlarged. Collet can be mounted easily by inclining it.



GRADE	RUNOUT (MAX, μm)	
	NOSE (A)	POINT (B)
(AA)	1	3
(A)	2	5
(STD)	5	15

Grade	application
AA grade · A grade	Reamer · Center drill Carbide small diameter drill, Endmill Whetstone for internal cylindrical grinding, Tool for high frequency motors Carbide drill Rotating tool for lathes (the tool rotation)
Standard	General drill, tap Rotating tool for lathes (Work rotating)

CHUCK COLLET CODE	RSC07 CR07-d GRADE		RSC10 CR10-d GRADE		RSC13 CR13-d GRADE		RSC16 CR16-d GRADE		RSC20 CR20-d GRADE		
φd	RANGE	φd	RANGE	φd	RANGE	φd	RANGE	φd	RANGE	φd	RANGE
1.0	0.5~1.0	1.0	0.5~1.0	1.0	0.5~1.0	1.5	1.0~1.5	2.0	1.5~2.0	2.0	1.5~2.0
1.5	1.0~1.5	1.5	1.0~1.5	1.5	1.0~1.5	1.5	1.0~1.5	2.0	1.5~2.0	2.5	2.0~2.5
2.0	1.5~2.0	2.0	1.5~2.0	2.0	1.5~2.0	2.0	1.5~2.0	2.5	2.0~2.5	3.0	2.5~3.0
2.5	2.0~2.5	2.5	2.0~2.5	2.5	2.0~2.5	2.5	2.0~2.5	3.0	2.5~3.0	4.0	3.0~4.0
3.0	2.5~3.0	3.0	2.5~3.0	3.0	2.5~3.0	3.0	2.5~3.0	4.0	3.0~4.0	5.0	4.0~5.0
3.5	3.0~3.5	4.0	3.0~4.0	4.0	3.0~4.0	4.0	3.0~4.0	5.0	4.0~5.0	6.0	5.0~6.0
4.0	3.5~4.0	5.0	4.0~5.0	5.0	4.0~5.0	5.0	4.0~5.0	6.0	5.0~6.0	7.0	6.0~7.0
4.5	4.0~4.5	6.0	5.0~6.0	6.0	5.0~6.0	6.0	5.0~6.0	7.0	6.0~7.0	8.0	7.0~8.0
5.0	4.5~5.0	7.0	6.0~7.0	7.0	6.0~7.0	7.0	6.0~7.0	8.0	7.0~8.0	9.0	8.0~9.0
5.5	5.0~5.5	8.0	7.0~8.0	8.0	7.0~8.0	8.0	7.0~8.0	9.0	8.0~9.0	10.0	9.0~10.0
6.0	5.5~6.0	9.0	8.0~9.0	9.0	8.0~9.0	9.0	8.0~9.0	10.0	9.0~10.0	11.0	10.0~11.0
6.5	6.0~6.5	10.0	9.0~10.0	10.0	9.0~10.0	10.0	9.0~10.0	11.0	10.0~11.0	12.0	11.0~12.0
7.0	6.5~7.0					11.0	10.0~11.0	12.0	11.0~12.0	13.0	12.0~13.0
						12.0	11.0~12.0	13.0	12.0~13.0	14.0	13.0~14.0
						13.0	12.0~13.0	14.0	13.0~14.0	15.0	14.0~15.0
								15.0	14.0~15.0	16.0	15.0~16.0
								16.0	15.0~16.0	17.0	16.0~17.0
										18.0	17.0~18.0
										19.0	18.0~19.0
										20.0	19.0~20.0
φD	11		16		20		25		32		
L	18		27		31		35		40		

Collet for through the groove (produce by order) are also available.

ORDERING EXAMPLE

① CR07 - ② 1.5 ③ AA

① Chuck Type
② φd
③ Grade

BT series

HSK series

ST series

Versatile Tool

Cutting Tool

Accessories

ACCESSORIES for COLLET CHUCK

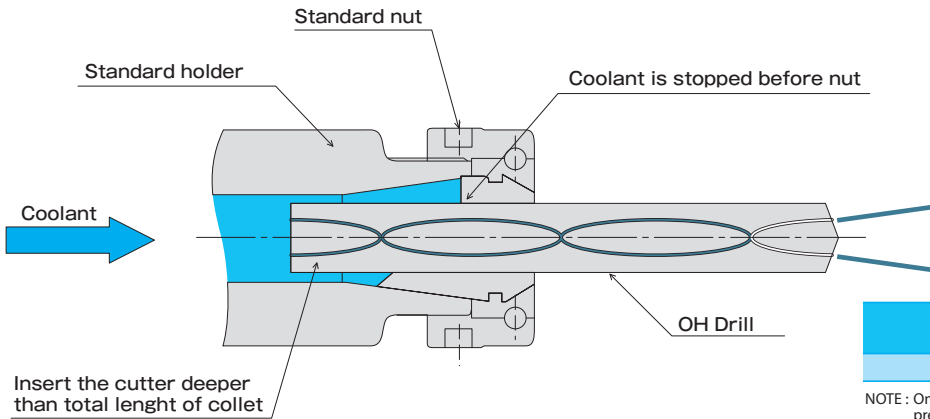


OIL HOLE CR COLLET

CROH[®]-D

FEATURES

- For thru-the-tool coolant application.
- High pressure up to 7 Mpa is acceptable.
- Standard holders and nuts can be used.
- Bearing of nut is not affected by coolant.



GRADE	RUNOUT (MAX. μm) 4 \times d
(AA)	5 μm

NOTE : Only super precious grade (AA) is available for sale only ultra precision grade (AA) type.

COLLET CODE/CHUCK	RSC07 CROH07-d GRADE		RSC10 CROH10-d GRADE		RSC13 CROH13-d GRADE		RSC16 CROH16-d GRADE		RSC20 CROH20-d GRADE	
ϕd	ϕd	RANGE	ϕd	RANGE	ϕd	RANGE	ϕd	RANGE	ϕd	RANGE
	2.0	1.9~2.0	2.0	1.9~2.0	3.0	2.9~3.0	3.0	2.9~3.0	3.0	2.9~3.0
	2.5	2.4~2.5	2.5	2.4~2.5	3.5	3.4~3.5	3.5	3.4~3.5	3.5	3.4~3.5
	3.0	2.9~3.0	3.0	2.9~3.0	4.0	3.9~4.0	4.0	3.9~4.0	4.0	3.9~4.0
	4.0	3.9~4.0	4.0	3.9~4.0	4.5	4.4~4.5	4.5	4.4~4.5	4.5	4.4~4.5
	4.5	4.4~4.5	4.5	4.4~4.5	5.0	4.9~5.0	5.0	4.9~5.0	5.0	4.9~5.0
	5.0	4.9~5.0	5.0	4.9~5.0	5.5	5.0~5.5	5.5	5.4~5.5	5.5	5.4~5.5
	5.5	5.4~5.5	5.5	5.0~5.5	6.0	5.5~6.0	6.0	5.5~6.0	6.0	5.9~6.0
	6.0	5.9~6.0	6.0	5.5~6.0	6.5	6.0~6.5	6.5	6.0~6.5	6.5	6.4~6.5
	6.5	6.4~6.5	6.5	6.0~6.5	7.0	6.5~7.0	7.0	6.5~7.0	7.0	6.9~7.0
	7.0	6.9~7.0	7.0	6.5~7.0	7.5	7.0~7.5	7.5	7.0~7.5	7.5	7.4~7.5
			7.5	7.0~7.5	8.0	7.5~8.0	8.0	7.5~8.0	8.0	7.5~8.0
			8.0	7.5~8.0	8.5	8.0~8.5	8.5	8.0~8.5	8.5	8.0~8.5
			8.5	8.0~8.5	9.0	8.5~9.0	9.0	8.5~9.0	9.0	8.5~9.0
			9.0	8.5~9.0	9.5	9.0~9.5	9.5	9.0~9.5	9.5	9.0~9.5
			9.5	9.0~9.5	10.0	9.5~10.0	10.0	9.5~10.0	10.0	9.5~10.0
			10.0	9.5~10.0	10.5	10.0~10.5	10.5	10.0~10.5	10.5	10.0~10.5
					11.0	10.5~11.0	11.0	10.5~11.0	11.0	10.5~11.0
					11.5	11.0~11.5	11.5	11.0~11.5	11.5	11.0~11.5
					12.0	11.5~12.0	12.0	11.5~12.0	12.0	11.5~12.0
					12.5	12.0~12.5	12.5	12.0~12.5	12.5	12.0~12.5
					13.0	12.5~13.0	13.0	12.5~13.0	13.0	12.5~13.0
							13.5	13.0~13.5	13.5	13.0~13.5
							14.0	13.5~14.0	14.0	13.5~14.0
							14.5	14.0~14.5	14.5	14.0~14.5
							15.0	14.5~15.0	15.0	14.5~15.0
							15.5	15.0~15.5	15.5	15.0~15.5
							16.0	15.5~16.0	16.0	15.5~16.0
									16.5	16.0~16.5
									17.0	16.5~17.0
									17.5	17.0~17.5
									18.0	17.5~18.0
									18.5	18.0~18.5
									19.0	18.5~19.0
									19.5	19.0~19.5
									20.0	19.5~20.0
ϕD		11		16		20		25		32
L		18		27		31		35		40

- NOTE : 1. Applicable for drill with oil hole.
 2. When in use insert a drill to the end from the rear of the collet.
 3. Do not use smaller sized cutting tools than inner diameter of collet, or coolant may leak out of a collet.
 4. If flat-face shank cutting tool is used, sealing function of collet does not work.

ORDERING EXAMPLE

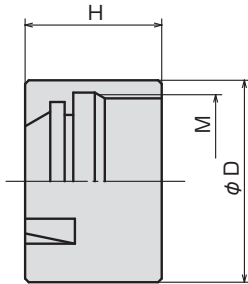
① CROH10 - ② 10 ③ AA

① Chuck Type
 ② ϕd
 ③ Grade

ACCESSORIES for SLIM CHUCK



NUT FOR SLIM CHUCK

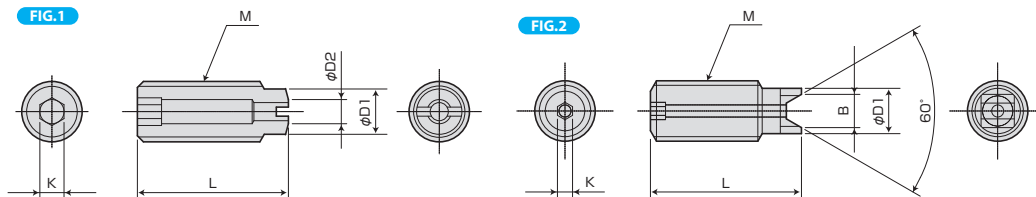


	CODE	M	øD	H	CHUCK
ER11MN	30924	M13×0.75	16	11.3	SSC07
ER16MN	30926	M19×1.0	22	18	SSC10
ER20MN	30928	M24×1.0	28	19	SSC13
ER25MN	30929	M30×1.0	35	20	SYFN16S

ER25MN is a nut for Synchro Tap Holder SYFN16S type, on page 57 and page 111.



ADJUST SCREW (For SLIM CHUCK)



MODEL	FIG	M	L	D1	D2	K	B	HOLDER
M6×20L-CTW 1)	1	M6×1.0	20	4.5	3	3	—	SSC07
RAS10-25-2.5 2)	2	M10×1.5	25	7.5	—	2.5	5.5	SSC10
RAS13-25-2.5 2)		M12×1.5		9.5			7.2	SSC13

Note 1: Drill less than $\phi 3$ cannot be used for adjustment protrusion in order to enter the coolant hole. CTW is not in the two pieces shape

Note 2: Drill less than $\phi 2$ cannot be used for adjustment protrusion in order to enter the coolant hole.



CHUCK WRENCH (For SLIM CHUCK)

	CODE	CHUCK
ER11MS	35861	SSC07
ER16MS	35863	SSC10
ER20MS	35865	SSC13
ER25MS	35867	SYFN16S

NOTE: ER25MS is a wrench for Synchro Tap Holder SYFN16S, type, on page 57 and page 111.