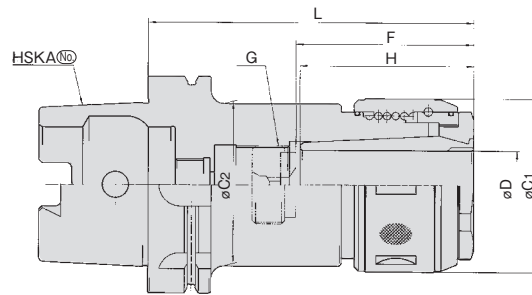


FEATURES

- The ball screw structure provides high clamping power.
- Easy handling.
- High accuracy and rigidity are kept lo



	MODEL	CODE	øD	L	øC1	øC2	H	G	F		SPRING COLLET	ADJUST SCREW	N/W (kg)	
									MIN.	MAX.				
HSKA63	-CTH16-120	26890	16	120	52	50	50	M18×1.5	50	70	C16-(16)	OR-M18-25		
	-CTH20-120	26892	20		60	54					M28×1.5			60
	-CTH25-120	26894	25		68	62		M18×1.5	60	C25-(25)				
	-CTH32-135	26896	32		135	80				62	80			CS32-(32)
HSKA100	-CTH16-135	27250	16	135	52	50	70	M18×1.5	50	69	C16-(16)	OR-M18		
	-CTH20-135	27252	20		60	54					M28×1.5			68
	-CTH25-135	27254	25		68	62	M18×1.5	68	79	C25-(25)				
	-CTH32-150	27256	32		150	80				75	M36×1.5			80
	-CTH42-165	27258	42		165	95	85	90	114	C42-(42)				

- NOTE:1. A Coolant pipe is supplied with chuck.
 2. A spring collet is supplied with Hard chuck.
 Unless otherwise required, maximum ID spring collet is supplied.
 3. Chuck wrench and adjust screw are sold separately.
 4. For thru-the-tool coolant application, OR-adjust screw is used.
 OR-adjust screw is sold separately.

ORDERING EXAMPLE

① HSKA63 - ② CTH ③ 16 - ④ 120

- ① Shank Size
- ② Holder's Name
- ③ Cutter's Shank Dia.
- ④ G.L. Length



ACCESSORIES

▶ P.48 ADJUST SCREW



ACCESSORIES

▶ P.118 SPLING COLLET, STRAIGHT COLLETS



ACCESSORIES

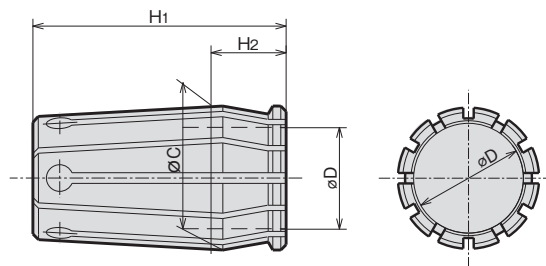
▶ P.119 CHUCK WRENCH

ACCESSORIES for HARD CHUCK



SPRING COLLET (For HARD CHUCK)

C^(No.)-^(D)



CODE	øD										øC	H1	H2	holder		
	6	8	10	12	16	20	25	32	42	50				CTH12L	CTH	CT
C12L-D	6	8	10	12							18.00	40	13	CTH12L	—	—
C16-D	6	8	10	12	16						24.00	50	17	—	CTH16	—
C20-D	6	8	10	12	16	20					28.75	50	15	—	CTH20	—
C25-D			10	12	16	20	25				35.75	68	19	—	CTH25	CT25
C32-D					16	20	25	32			45.25	80	21	—	CTH32	CT32
※CS32-D(SHORT)					16	20	25	32			45.25	70	21	—	CTH32	—
C42-D						20	25	32	42		55.00	90	21	—	CTH42	—
C50-D								32	42	50	65.00	95	25	—	CTH50	—

NOTE※ CS32-D(SHORT) spring collet is for BT40·NT40 Hard Chuck.

ORDERING EXAMPLE

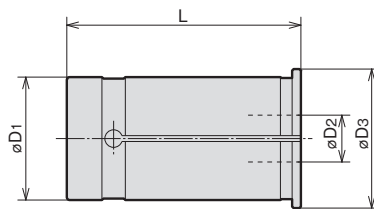
① ②
C12 - 6

① Chack Type
 ② øD



STRAIGHT COLLET

SC^(D1)-^(D2)



CODE	øD3	L
SC ^(D1) - ^(D2)		
SC16	-6·8·10·12	47
SC20	-6·6.8·7·8·8.5·9·10·11·12·13·14·15·16	50
SC25	-6·6.8·7·8·8.5·9·10·11·12·13·14·15·16·17·18·19·20·21	60
SC32	-6·6.8·7·8·8.5·9·10·11·12·13·14·15·16·17·18·19·20·21·22·23·24·25	70
SC42	-6·6.8·7·8·8.5·9·10·11·12·13·14·15·16·17·18·19·20·21·22·23·24·25·32	80

ORDERING EXAMPLE

① ② ③
SC 16 - 6

① Name
 ② D1
 ③ D2

BT series

HSK series

ST series

Versatile Tool

Cutting Tool

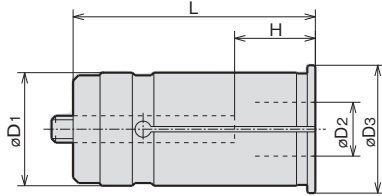
Accessories

ACCESSORIES for HARD CHUCK



STRAIGHT COLLET WITH ADJUST SCREW

NC $\text{\textcircled{D}_1}$ - $\text{\textcircled{D}_2}$



CODE	NC $\text{\textcircled{D}_1}$ - $\text{\textcircled{D}_2}$	$\text{\textcircled{D}_3}$	L	H	
				MIN.	MAX.
NC20	-6·8·10·12·16	23.5	60	25	35
NC32	-6·8·10	37.5	80	20	45
	-12·16·20·25			25	55
NC42	-6·8·10·12	47.5	90	20	45
	-16·20·25·32			30	65

Note:
* For all SHOWA chuck

ORDERING EXAMPLE

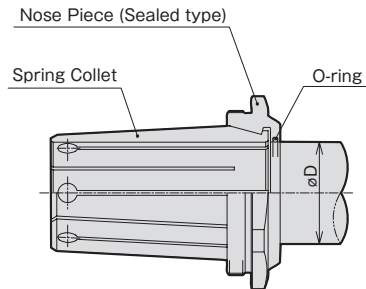
$\text{\textcircled{1}}$ **NC** $\text{\textcircled{2}}$ **32** - $\text{\textcircled{3}}$ **6**

- $\text{\textcircled{1}}$ Name
- $\text{\textcircled{2}}$ D1
- $\text{\textcircled{3}}$ D2



NOSE PIECE (For HARD CHUCK)

NG $\text{\textcircled{No}}$ - $\text{\textcircled{D}}$



ORDERING EXAMPLE

$\text{\textcircled{1}}$ **NG** $\text{\textcircled{2}}$ **16** - $\text{\textcircled{3}}$ **6**

- $\text{\textcircled{1}}$ Name
- $\text{\textcircled{2}}$ Chuck Size
- $\text{\textcircled{3}}$ $\text{\textcircled{D}}$

CODE	$\text{\textcircled{D}}$										HARD CHUCK CODE	
NG16- $\text{\textcircled{D}}$	6	8	10	12	16							CTH16
NG20- $\text{\textcircled{D}}$	6	8	10	12	16	20						CTH20
NG25- $\text{\textcircled{D}}$				12	16	20	25					CTH25
NG32- $\text{\textcircled{D}}$					16	20	25	32				CTH32
NG42- $\text{\textcircled{D}}$						20	25	32	42			CTH42
NG50- $\text{\textcircled{D}}$								32	42	50	50.8	CTH50



CHUCK WRENCH (For HARD CHUCK)

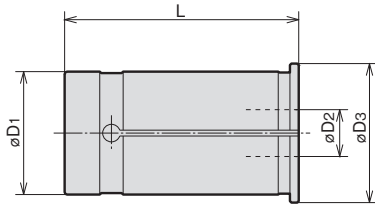
HOOK SPANNER		
CHUCK CODE	WRENCH CODE	
HARD CHUCK		
CTH12L.CTH16	FS52-55G	35852
CTH20.CT25G	FS58-62G	35853
CTH25.CT32G	FS68-75G	35854
CTH32	FS80-90G	35855
CTH42	FS92-100	
CTH50	FS105-115	35829

ACCESSORIES for HARD CHUCK



STRAIGHT COLLET

SC^①-^②D₂



CODE		øD3	L
SC ^① - ^② D ₂			
SC16	-6·8·10·12	20	47
SC20	-6·6.8·7·8·8.5·9·10·11·12·13·14·15·16	23.5	50
SC25	-6·6.8·7·8·8.5·9·10·11·12·13·14·15·16·17·18·19·20·21	30	60
SC32	-6·6.8·7·8·8.5·9·10·11·12·13·14·15·16·17·18·19·20·21·22·23·24·25	37.5	70
SC42	-6·6.8·7·8·8.5·9·10·11·12·13·14·15·16·17·18·19·20·21·22·23·24·25·32	47.5	80

ORDERING EXAMPLE

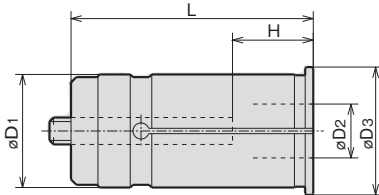
① SC ② 16 - ③ 6

- ① Name
- ② D1
- ③ D2



STRAIGHT COLLET WITH ADJUST SCREW

NC^①-^②D₂



CODE		øD3	L	H	
NC ^① - ^② D ₂				MIN.	MAX.
NC20	-6·8·10·12·16	23.5	60	25	35
	-6·8·10			20	45
NC32	-12·16·20·25	37.5	80	25	55
	-6·8·10·12			20	45
NC42	-16·20·25·32	47.5	90	30	65

Note:
* For all SHOWA chuck

ORDERING EXAMPLE

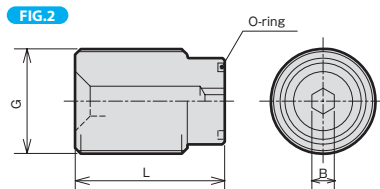
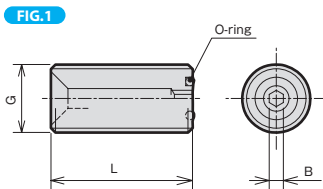
① NC ② 32 - ③ 6

- ① Name
- ② D1
- ③ D2



ADJUST SCREW (For HARD CHUCK, NEW MILLING CHUCK)

OR-M^①-^②L



ORDERING EXAMPLE

① OR ② M10 - ③ 25

- ① Name
- ② G
- ③ L

CODE	FIG.	G	L	B	O-ring
OR-M10(-25)	1	M10×1.5	25	2.5	S- 5
OR-M12(-25)		M12×1.5	25	2.5	S- 5
OR-M14(-35)		M14×1.5	35	4	P- 6
OR-M18(-25)		M18×1.5	25	5	P- 9
OR-M18(-35)		M18×1.5	35	5	P- 9
OR-M24 -25	2	M24×1.5	25	6	P- 9
OR-M24(-35)		M24×1.5	35	6	P- 9
OR-M28 -25		M28×1.5	25	6	P-16
OR-M28(-40)		M28×1.5	30	6	P-16
OR-M28(-30)		M28×1.5	40	6	P-16
OR-M36 -20		M36×1.5	20	6	P-21
OR-M36(-40)		M36×1.5	40	6	P-21