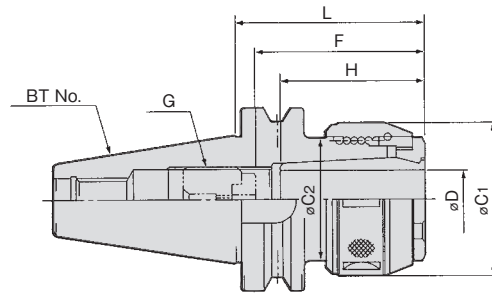


FEATURES

- The ball screw structure provides high clamping power.
- Easy handling.
- High accuracy and rigidity are kept long.



MODEL	CODE		øD	L	øC1	øC2	H	G	F		SPRING COLLET	ADJUST SCREW	N/W (kg)
	BT	SBT							MIN.	MAX.			
BT40 SBT40	-CTH16 -105	11192	2201002	16	105	52	50	M18×1.5	50	80	C16-(16)	OR-M18	1.9
	-135	11194	2201004		135								2.3
	-165	11196	2201006		165								2.7
	-CTH20 -090	11198	2201008	20	90	60	54	M18×1.5	50	75	C20-(20)	OR-M18	1.9
	-120	11200	2201010		120								2.4
	-CTH25 -105	11202	2201012	25	105	68	62	M28×1.5	68	85	C25-(25)	OR-M28	2.2
	-135	11204	2201014		135								2.9
	-165	11206	2201016		165								3.5
	-CTH32 -105	11208	2201018	32	105	80	62	M18×1.5	80	95	CS32-(32)	OR-M18	2.6
-135	11210	2201020	M28×1.5		3.3								
BT50 SBT50	-CTH16 -105	13402	2202002	16	105	52	50	M18×1.5	50	100	C16-(16)	OR-M18	4.2
	-135	13404	2202004		135								4.7
	-165	13406	2202006		165								5.2
	-CTH20 -105	13428	2202008	20	105	60	54	M18×1.5	50	100	C20-(20)	OR-M18	4.6
	-135	13430	2202010		135								5.1
	-165	13432	2202012		165								5.6
	-CTH25 -105	13408	2202014	25	105	68	62	M28×1.5	68	100	C25-(25)	OR-M28	4.6
	-135	13410	2202016		135								5.2
	-165	13412	2202018		165								6.0
	-CTH32 -105	13414	2202020	32	105	80	67.5	M36×1.5	80	100	C32-(32)	OR-M36	4.8
	-135	13416	2202022		75		5.9						
	-165	13418	2202024		165		6.9						
	-CTH42 -105	13420	2202026	42	105	95	79.5	M36×1.5	90	110	C42-(42)	OR-M36	5.2
	-135	13422	2202028		87		6.5						
	-165	13424	2202030		165		7.7						
-CTH50 -120	13434	2202032	50 (50.8)	120	105	99	M36×1.5	95	115	C50-(50) -(50.8)	OR-M36	6.4	
-135	13436			135								7.2	
-165	13438			165								8.7	

- NOTE:1. A spring collet is supplied with Hard chuck.
 Unless otherwise required, maximum ID spring collet is supplied.
 2. Chuck wrench and adjust screw are sold separately.
 3. For thru-the-tool coolant application, OR-adjust screw is used.
 OR-adjust screw is sold separately.
 4. SBT is shank for BT Dual-Face-Contact spindle.

ORDERING EXAMPLE

①	BT40	-	CTH	③	20	-	④	135
①	Shank Size							
②	Holder's Name							
③	Cutter's Shank Dia.							
④	G.L. Length							

SLIM HARD CHUCK

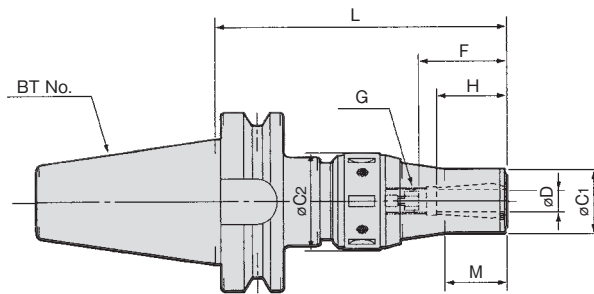
FEATURES p.7-8

BT^(No.)-CTH12L-^(L)

▶▶▶ Thru-the-tool Coolant Available

FEATURES

- The ball screw structure provides high clamping power.
- Easy handling.
- High accuracy and rigidity are kept long.



	MODEL	CODE		øD	L	M	øC1	øC2	H	G	F		SPRING COLLET	ADJUST SCREW	N/W (kg)
		BT	SBT								MIN.	MAX.			
BT40 SBT40	-CTH12L -135	11216	2201034	6~12	135	35	35	52	40	M14×1.5	40	70	C12-(D)	OR-M14	1.9
BT50 SBT50	-CTH12L -165	13427	2201036		165										4.7

NOTE: 1. For thru-the-tool coolant application, OR-adjust screw is used.
 2. Spring collet and chuck wrench are sold separately.
 3. SBT is shank for BT Dual-Face-Contact spindle.

ACCESSORIES
P.47 **SPLING COLLET**

ACCESSORIES
P.48 **STRAIGHT COLLETS, ADJUST SCREW**

ACCESSORIES
P.49 **CHUCK WRENCH**

ORDERING EXAMPLE

①	BT40	-	②	CTH	③	12	④	L	-	⑤	135
①	Shank Size										
②	Holder's Name										
③	Max. øD										
④	Long Type										
⑤	G.L. Length										

BT series

HSK series

ST series

Versatile Tool

Cutting Tool

Accessories

ACCESSORIES for HARD CHUCK



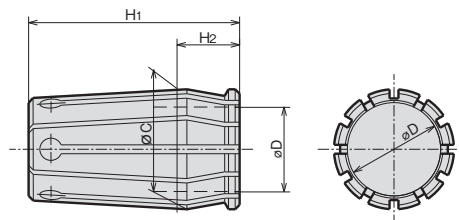
SPRING COLLET (For HARD CHUCK)

C^① - D^②

ORDERING EXAMPLE

^① C12 - ^② 6

- ① Chuck Type
- ② ϕ D



CODE	ϕ D										ϕ C	H1	H2	Applicable holder			
														CTH12L	CTH	CT	
C12L-D	6	8	10	12							18.00	40	13	CTH12L	—	—	
C16-D	6	8	10	12	16						24.00	50	17	—	CTH16	—	
C20-D	6	8	10	12	16	20					28.75	50	15	—	CTH20	—	
C25-D			10	12	16	20	25				35.75	68	19	—	CTH25	CT25	
C32-D					16	20	25	32			45.25	80	21	—	CTH32	CT32	
※CS32-D(SHORT)					16	20	25	32			45.25	70	21	—	CTH32	—	
C42-D						20	25	32	42		55.00	90	21	—	CTH42	—	
C50-D								32	42	50	50.8	65.00	95	25	—	CTH50	—

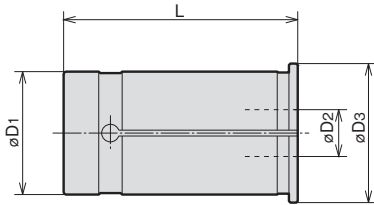
NOTE※ CS32-D(SHORT) spring collet is for BT40·NT40 Hard Chuck.

ACCESSORIES for HARD CHUCK



STRAIGHT COLLET

SC^①-^②D₂



CODE		øD3	L
SC ^① - ^② D ₂			
SC16	-6·8·10·12	20	47
SC20	-6·6.8·7·8·8.5·9·10·11·12·13·14·15·16	23.5	50
SC25	-6·6.8·7·8·8.5·9·10·11·12·13·14·15·16·17·18·19·20·21	30	60
SC32	-6·6.8·7·8·8.5·9·10·11·12·13·14·15·16·17·18·19·20·21·22·23·24·25	37.5	70
SC42	-6·6.8·7·8·8.5·9·10·11·12·13·14·15·16·17·18·19·20·21·22·23·24·25·32	47.5	80

ORDERING EXAMPLE

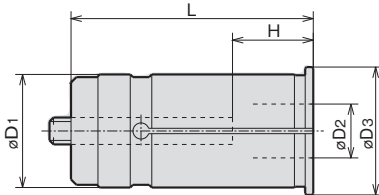
① SC ② 16 - ③ 6

- ① Name
- ② D1
- ③ D2



STRAIGHT COLLET WITH ADJUST SCREW

NC^①-^②D₂



CODE		øD3	L	H	
NC ^① - ^② D ₂				MIN.	MAX.
NC20	-6·8·10·12·16	23.5	60	25	35
	-6·8·10			20	45
NC32	-12·16·20·25	37.5	80	25	55
	-6·8·10·12			20	45
NC42	-16·20·25·32	47.5	90	30	65

Note:
* For all SHOWA chuck

ORDERING EXAMPLE

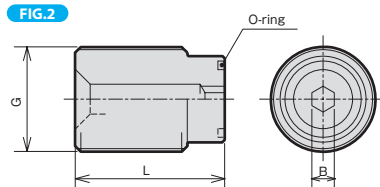
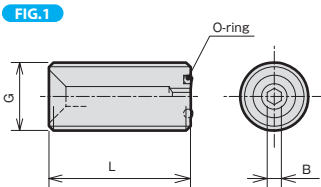
① NC ② 32 - ③ 6

- ① Name
- ② D1
- ③ D2



ADJUST SCREW (For HARD CHUCK, NEW MILLING CHUCK)

OR-M^①-^②L



ORDERING EXAMPLE

① OR ② M10 - ③ 25

- ① Name
- ② G
- ③ L

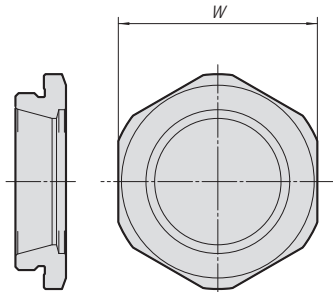
CODE	FIG.	G	L	B	O-ring
OR-M10(-25)	1	M10×1.5	25	2.5	S- 5
OR-M12(-25)		M12×1.5	25	2.5	S- 5
OR-M14(-35)		M14×1.5	35	4	P- 6
OR-M18(-25)		M18×1.5	25	5	P- 9
OR-M18(-35)		M18×1.5	35	5	P- 9
OR-M24 -25	2	M24×1.5	25	6	P- 9
OR-M24(-35)		M24×1.5	35	6	P- 9
OR-M28 -25		M28×1.5	25	6	P-16
OR-M28 -30		M28×1.5	30	6	P-16
OR-M28(-40)		M28×1.5	40	6	P-16
OR-M36 -20		M36×1.5	20	6	P-21
OR-M36(-40)		M36×1.5	40	6	P-21

ACCESSORIES for HARD CHUCK



NOSE PIECE (For HARD CHUCK)

N^(No.)-D

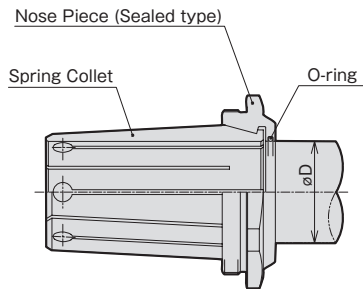


MODEL	CODE	W	holder
N16-16	33702	39	CTH16
N20-20	33703	43	CTH20
N25-25	33704	51	CTH25
N32-32	33706	63	CTH32
N42-42	33708	74	CTH42
N50-50	33710	84	CTH50



NOSE PIECE (For HARD CHUCK)

NG^(No.)-D



ORDERING EXAMPLE

① **NG** ② **16** - ③ **6**

- ① Name
- ② Chuck Size
- ③ øD

CODE	øD						HARD CHUCK CODE					
NG16-øD	6	8	10	12	16						CTH16	
NG20-øD	6	8	10	12	16	20					CTH20	
NG25-øD				12	16	20	25				CTH25	
NG32-øD					16	20	25	32			CTH32	
NG42-øD						20	25	32	42		CTH42	
NG50-øD								32	42	50	50.8	CTH50



CHUCK WRENCH (For HARD CHUCK)

HOOK SPANNER

CHUCK CODE	WRENCH CODE	
HARD CHUCK		
CTH12L,CTH16	FS52-55G	35852
CTH20,CT25G	FS58-62G	35853
CTH25,CT32G	FS68-75G	35854
CTH32	FS80-90G	35855
CTH42	FS92-100	
CTH50	FS105-115	35829