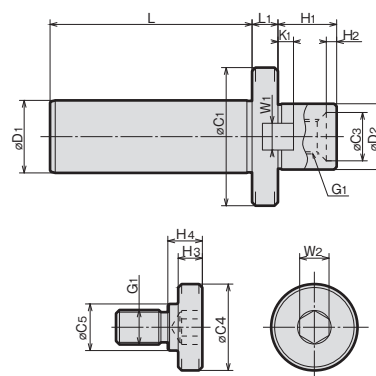


正面フライスアーバA型

ST[®]No-FMA[®]D2

FACE MILL ARBOR (Type A)



MODEL	CODE	φD1	φD2(h6)	L	L1	φC1	φC3	H1	H2	KEY		G1	CLAMP BOLT					CLAMP BOLT	N/W (kg)	
										W1	K1		φC4	φC5	H3	H4	W2			
ST32	-FMA25.4	30462	32	25.4	112	15	50	◇	22	◇	9.5	5	M12	33	23	10	12	10	MBA-M12	1.1
	-FMA31.75	30464		31.75		15	60	24	30	6	12.7	7	M16	40	23	10	16	14	-M16	1.3
	-FMA38.1	30466		38.1		18	80	28	34	6	15.9	9	M20	50	27	14	20	17	-M20	1.9
ST42	-FMA25.4	30468	42	25.4	117	15	50	◇	22	◇	9.5	5	M12	33	23	10	12	10	MBA-M12	1.7
	-FMA31.75	30470		31.75		15	60	24	30	6	12.7	7	M16	40	23	10	16	14	-M16	1.9
	-FMA38.1	30472		38.1		18	80	28	34	6	15.9	9	M20	50	27	14	20	17	-M20	2.5
	-FMA50.8	30474		50.8		20	100	38	36	10	19.0	10	M24	65	37	14	24	17	-M24	3.4

ご注文例 ORDERING EXAMPLE

① **ST32** ② **FMA** - ③ **25.4**

- ① シャンクサイズ φD1 Shank Size φD1
- ② 呼称 Name
- ③ インロー径 φD2 φD2

BT series

HSK series

ST series

Versatile Tool

Cutting Tool

Accessories

Data